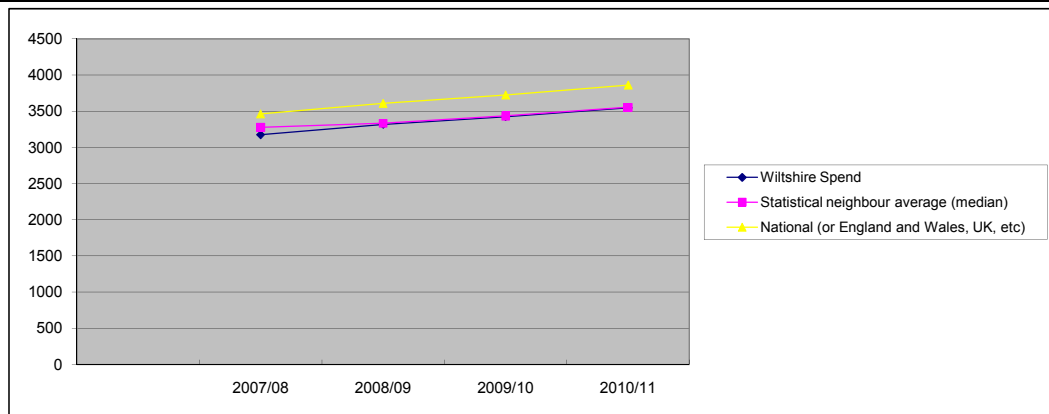


## Wiltshire Section 251 Benchmarking 2010-11

<b>Section 251 Line</b>	<b>Individual Schools Budget</b>
<b>Definition</b>	<i>Line 1.0.1 Individual Schools Budget per pupil</i>

Table of data								
Financial year	2007/08	2008/09	2009/10	2010/11				
<b>Wiltshire Spend</b>	3176	3320	3426	3549				
<b>Statistical neighbour average (median)</b>	3278	3334	3435	3555				
<b>National (or England and Wales, UK, etc)</b>	3465	3610	3726	3864				



**Describe the data to pick out features of performance and trends compared to other Local Authorities and National performance**

<b>2010/11</b>	<p>Funding Delegated to schools in Wiltshire is lower than the national average. This would be expected as funding received by the county is lower than more urban authorities, for example. Comparison with statistical neighbours shows Wiltshire moving closer to the levels of similar authorities, this may be partly accounted for by the increase in funding delegated for SEN in secondary schools for Enhanced Learning Provision (ELP). All funding for Practical Learning is also delegated in Wiltshire.</p>
----------------	--

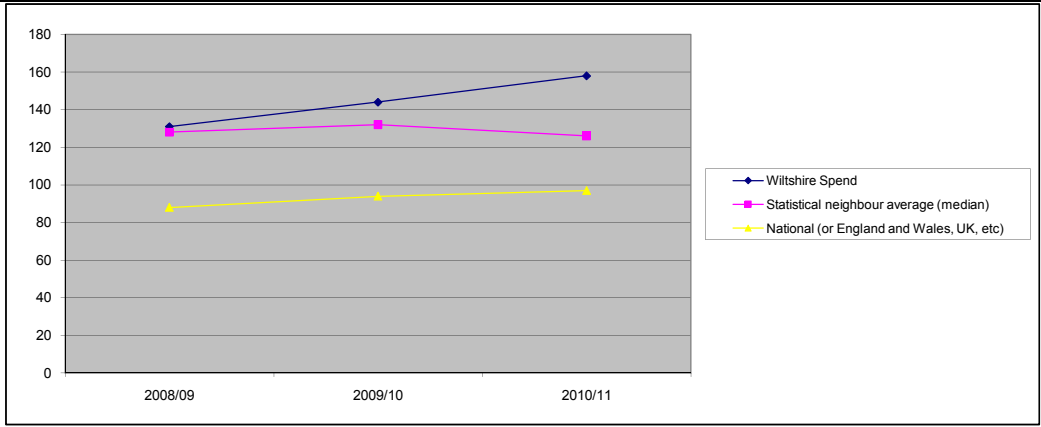
**Data Source:**  
 Section 52/251 Benchmarking - line 1.0.1. includes school budget share comprising DSG and LSC allocations

<b>Date of completion</b>	<b>28/09/2010</b>
<b>Completed by</b>	<b>Liz Williams</b>

## Wiltshire Section 251 Benchmarking 2010-11

<b>Section 251 Line</b>	<b>1.0.9 - Early Years Expenditure on free entitlement in PVI Providers</b>
<b>Definition</b>	<i>Expenditure on the Free Entitlement in PVI providers (funded by the LA) (1.0.9) £ per pupil</i>

Table of data							
Financial year	2007/08	2008/09	2009/10	2010/11			
<b>Wiltshire Spend</b>		131	144	158			
<b>Statistical neighbour average (median)</b>		128	132	126			
<b>National (or England and Wales, UK, etc)</b>		88	94	97			



**Describe the data to pick out features of performance and trends compared to other Local Authorities and National performance**

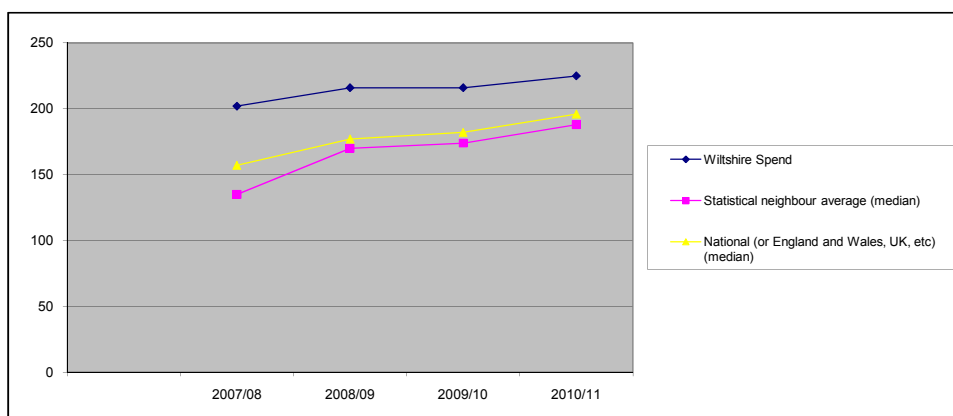
<b>2010/11</b>	<p>Expenditure on in the PVI Sector is consistently higher in Wiltshire than its statistical neighbours or the national picture. This may reflect that high proportion of PVI settings as part of the free entitlement delivery in the county.</p> <p>Investment in the implementation of the Early Years Single Funding Formula in Wiltshire in 2010/11 may account for the increase in the relative position compared with statistical neighbours in 2010/11</p>
----------------	--

<b>Date of completion</b>	<b>28/09/2010</b>
<b>Completed by</b>	<b>Liz Williams</b>

## Wiltshire Section 251 Benchmarking 2010-11

<b>Section 251 Line</b>	<b>Lines 1.2.1 to 1.2.8 - Schools Budget SEN</b>
<b>Definition</b>	<i>Schools Budget SEN (not including PRUs, behaviour support, education out of school) £ / pupil (sum of lines 1.2.1 to 1.2.8)</i>

Table of data								
Financial year	2007/08	2008/09	2009/10	2010/11				
<b>Wiltshire Spend</b>	202	216	216	225				
<b>Statistical neighbour average (median)</b>	135	170	174	188				
<b>National (or England and Wales, UK, etc) (median)</b>	157	177	182	196				



**Describe the data to pick out features of performance and trends compared to other Local Authorities and National performance**

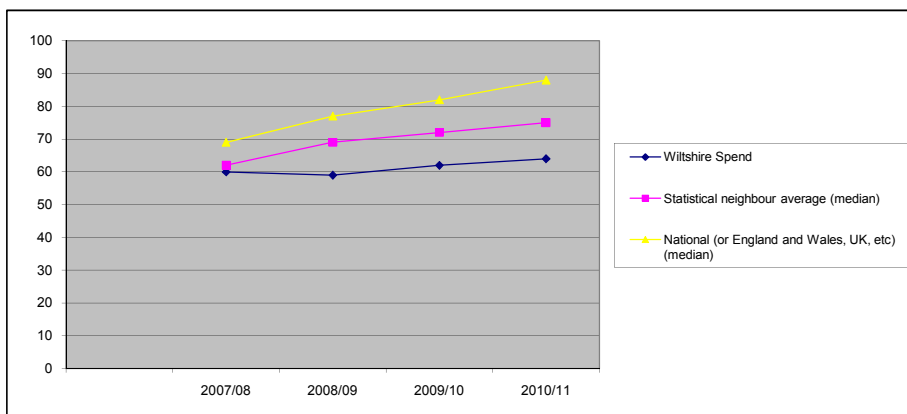
<b>2010/11</b>	Expenditure on SEN from centrally retained DSG is consistently higher in Wiltshire than the national average and the average for statistical neighbours. This is accounted for by the level of funding retained centrally for statemented pupils and allocated as Named Pupil Allowances. This funding is allocated to schools but assigned to individual pupil needs rather than delegated through a formula.
----------------	--

<b>Date of completion</b>	<b>28/09/2010</b>
<b>Completed by</b>	<b>Liz Williams</b>

## Wiltshire Section 251 Benchmarking 2010-11

<b>Section 251 Line</b>	<b>Lines 1.3.1 to 1.3.3 Behaviour Support</b>
<b>Definition</b>	<i>PRUs/ Behaviour Support/ Education Otherwise £ / pupil (Sum of 1.3.1 to 1.3.3)</i>

Table of data							
Financial year	2007/08	2008/09	2009/10	2010/11			
<b>Wiltshire Spend</b>	60	59	62	64			
<b>Statistical neighbour average (median)</b>	62	69	72	75			
<b>National (or England and Wales, UK, etc) (median)</b>	69	77	82	88			



**Describe the data to pick out features of performance and trends compared to other Local Authorities and National performance**

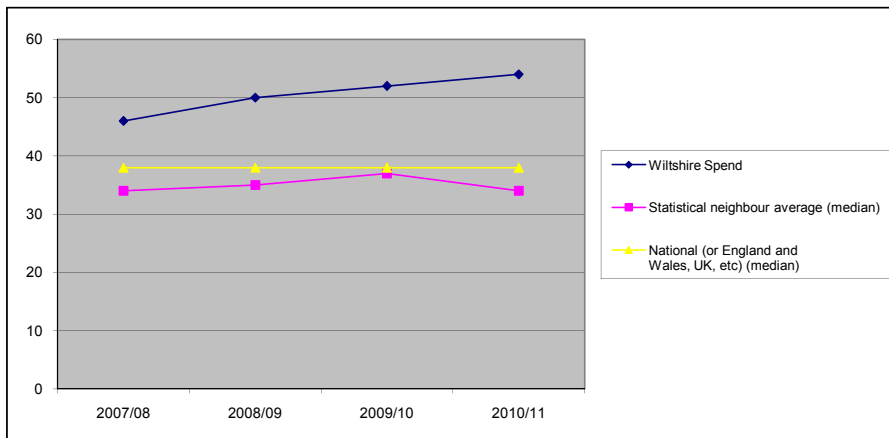
<b>2010/11</b>	Wiltshire spend is lower than statistical neighbours. More detailed analysis by Schools Forum SEN Group has raised concerns that in the case of Pupil Referral Units (PRUs) it is difficult to establish if we are comparing like with like in terms of how the service is delivered however the pattern of lower spend in Wiltshire is consistent from year to year.
----------------	---

<b>Date of completion</b>	<b>28/09/2010</b>
<b>Completed by</b>	<b>Liz Williams</b>

## Wiltshire Section 251 Benchmarking 2010-11

<b>Section 251 Line</b>	<b>Line 2.0.6 SEN - non Schools Budget</b>
<b>Definition</b>	<i>SEN Expenditure by the LA - includes Psychology Service, SEN Administration, Assessment and Co-ordination, Therapies (Speech &amp; Language), Parent Partnership, Monitoring of SEN Provison</i>

Table of data								
Financial year	2007/08	2008/09	2009/10	2010/11				
<b>Wiltshire Spend</b>	46	50	52	54				
<b>Statistical neighbour</b>	34	35	37	34				
<b>National (or England and</b>	38	38	38	38				



**Describe the data to pick out features of performance and trends compared to other Local Authorities and National performance**

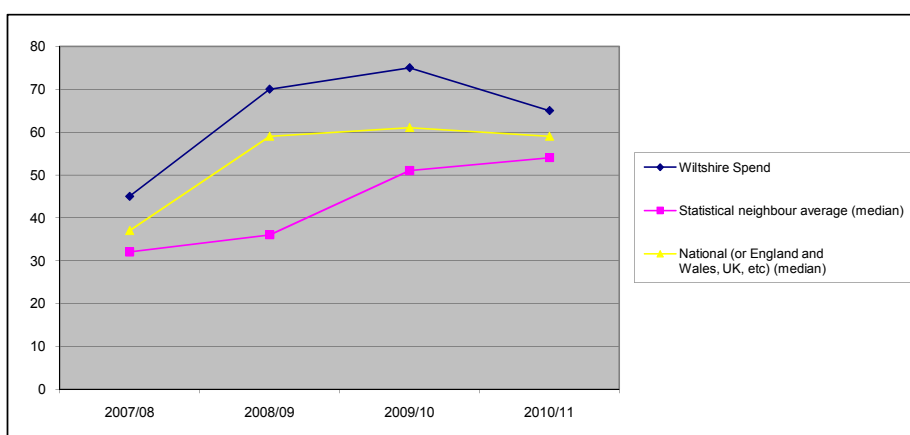
<b>2010/11</b>	Wiltshire spends above the national average and the average for statistical neighbours on SEN. Expenditure on SEN Administration and Assessment is higher than all similar authorities and expenditure on therapies (speech & language) is the second highest in our group of statistical neighbours
----------------	--

<b>Date of completion</b>	<b>28/09/2010</b>
<b>Completed by</b>	<b>Liz Williams</b>

## Wiltshire Section 251 Benchmarking 2010-11

<b>Section 251 Line</b>	Line 2.1.9 School Improvement
<b>Definition</b>	School Improvement Services

Table of data								
Financial year	2007/08	2008/09	2009/10	2010/11				
<b>Wiltshire Spend</b>	45	70	75	65				
<b>Statistical neighbour average (median)</b>	32	36	51	54				
<b>National (or England and Wales, UK, etc) (median)</b>	37	59	61	59				



**Describe the data to pick out features of performance and trends compared to other Local Authorities and National performance**

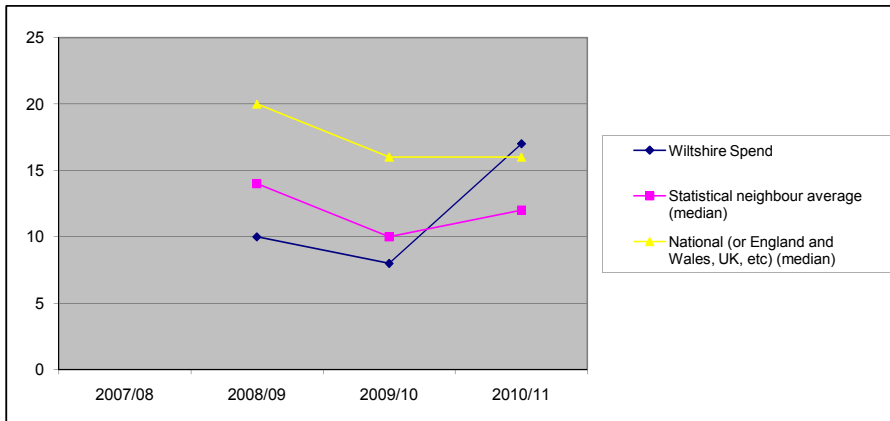
<b>2010/11</b>	<p>Pattern of spend shows a wide gap between spend in Wiltshire compared with statistical neighbours - gap narrowing in 2010/11. Spend is more reflective of the national pattern but higher.</p> <p>Would need further work to understand the differences.</p>
----------------	---

<b>Date of completion</b>	<b>28/09/2010</b>
<b>Completed by</b>	<b>Liz Williams</b>

## Wiltshire Section 251 Benchmarking 2010-11

<b>Section 251 Line</b>	<b>Youth Justice</b>
<b>Definition</b>	<i>Youth Offending Teams - £ per head population 0-17</i>

Table of data		2007/08	2008/09	2009/10	2010/11				
Financial year		2007/08	2008/09	2009/10	2010/11				
<b>Wiltshire Spend</b>			10	8	17				
<b>Statistical neighbour average (median)</b>			14	10	12				
<b>National (or England and Wales, UK, etc) (median)</b>			20	16	16				



**Describe the data to pick out features of performance and trends compared to other Local Authorities and National performance**

**2010/11** NOTE Figure for 2010/11 is an **error**, resulting in the expenditure being overstated on line 5.0.3 of the return

<b>Date of completion</b>	<b>28/09/2010</b>
<b>Completed by</b>	<b>Liz Williams</b>

## Wiltshire Section 251 Benchmarking 2010-11

<b>Section 251 Line</b>	<b>Services to Young People</b>
<b>Definition</b>	<i>Services for Young People including Positive Activities, Youth work, Connexions, Student Support</i>

Table of data							
Financial year	2007/08	2008/09	2009/10	2010/11			
<b>Wiltshire Spend</b>		107	77	68			
<b>Statistical neighbour average (median)</b>		107	73	68			
<b>National (or England and Wales, UK, etc) (median)</b>		121	90	82			



**Describe the data to pick out features of performance and trends compared to other Local Authorities and National performance**

<b>2010/11</b>	<p>Wiltshire largely in line with similar authorities - decrease in spend in Connexions from year to year</p> <p>Note that the requirements of the return have varied from year to year so may not be comparing like with like from one year to the next although position in relation to others should be consistent each year</p>
----------------	---

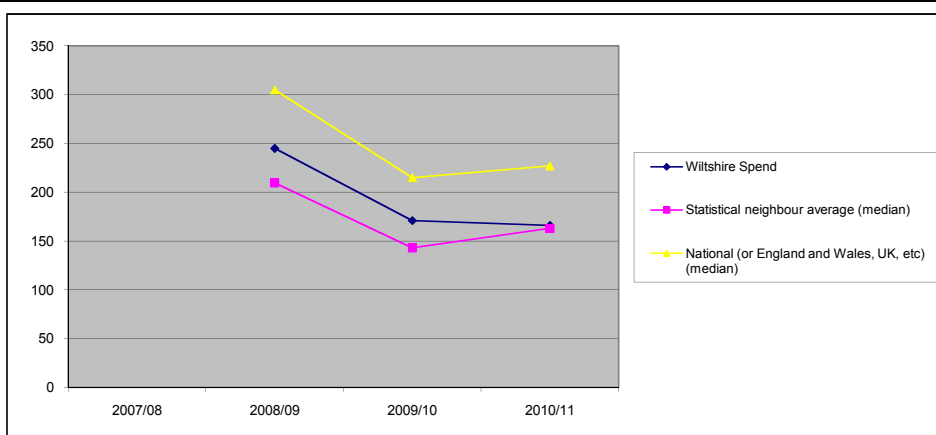
<b>Date of completion</b>	<b>29/09/2010</b>
<b>Completed by</b>	<b>Liz Williams</b>



## Wiltshire Section 251 Benchmarking 2010-11

<b>Section 251 Line</b>	<b>Children Looked After</b>
<b>Definition</b>	<p><i>Services for Children Looked After: Fostering Services, Residential Services, Secure Accommodation, Short Breaks for Looked After Disabled children, advocacy for LAC, Education for LAC, UASCs</i></p> <p><i>£ per head population 0-17</i></p>

Table of data							
Financial year	2007/08	2008/09	2009/10	2010/11			
<b>Wiltshire Spend</b>		245	171	166			
<b>Statistical neighbour average (median)</b>		210	143	163			
<b>National (or England and Wales, UK, etc) (median)</b>		305	215	227			



**Describe the data to pick out features of performance and trends compared to other Local Authorities and National performance**

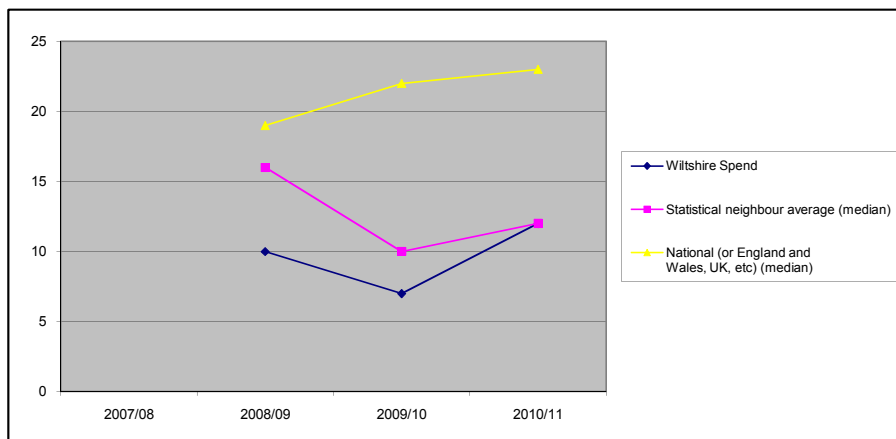
<b>2010/11</b>	<p>Wiltshire gap to statistical neighbours reducing in 2010/11.</p> <p>National and statistical neighbour trend of spend increasing in 2010/11 not followed in Wiltshire</p>
----------------	--

<b>Date of completion</b>	<b>29/09/2010</b>
<b>Completed by</b>	<b>Liz Williams</b>

## Wiltshire Section 251 Benchmarking 2010-11

<b>Section 251 Line</b>	<b>Children's Safety</b>
<b>Definition</b>	<p><i>Children's Safety - Child Death Review Processes, Preventative Services (Children's Fund), LSCB and LA functions in respect of Child Protection</i></p> <p><i>£ per head population 0 - 17</i></p>

Table of data								
Financial year	2007/08	2008/09	2009/10	2010/11				
<b>Wiltshire Spend</b>		10	7	12				
<b>Statistical neighbour average (median)</b>		16	10	12				
<b>National (or England and Wales, UK, etc) (median)</b>		19	22	23				



**Describe the data to pick out features of performance and trends compared to other Local Authorities and National performance**

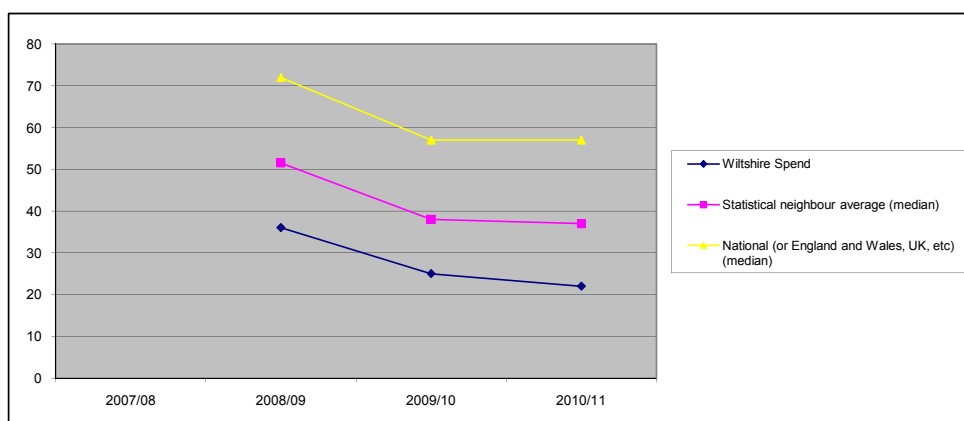
<b>2010/11</b>	2010/11 spend for Wiltshire in line with average for Statistical Neighbours
----------------	---

<b>Date of completion</b>	<b>30/09/2010</b>
<b>Completed by</b>	<b>Liz Williams</b>

## Wiltshire Section 251 Benchmarking 2010-11

<b>Section 251 Line</b>	<b>Family Support Services</b>
<b>Definition</b>	<i>Includes: Direct Payments, Short Breaks, Family Support, Teenage Pregnancy, Substance Misuse</i> £ per head population 0- 17

Table of data							
Financial year	2007/08	2008/09	2009/10	2010/11			
<b>Wiltshire Spend</b>		36	25	22			
<b>Statistical neighbour average (median)</b>		52	38	37			
<b>National (or England and Wales, UK, etc) (median)</b>		72	57	57			



**Describe the data to pick out features of performance and trends compared to other Local Authorities and National performance**

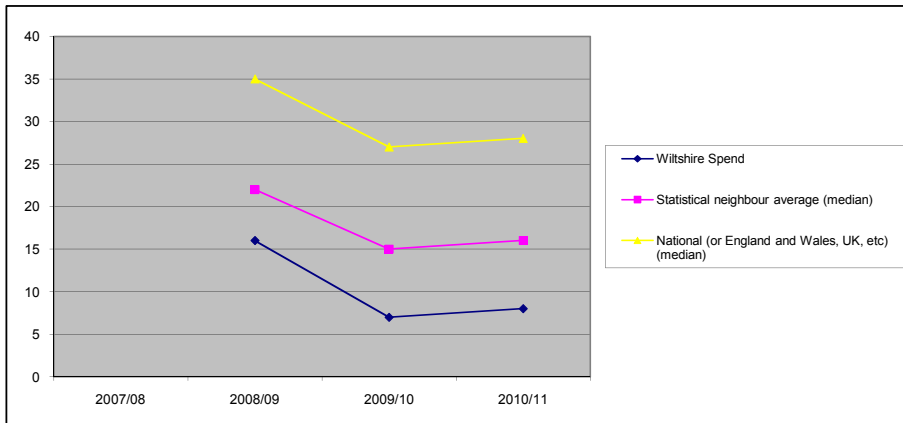
<b>2010/11</b>	Wiltshire spend consistently lower than that for England and statistical neighbours
----------------	---

<b>Date of completion</b>	<b>30/09/2010</b>
<b>Completed by</b>	<b>Liz Williams</b>

## Wiltshire Section 251 Benchmarking 2010-11

<b>Section 251 Line</b>	<b>Other Children &amp; Families Services</b>
<b>Definition</b>	<p><i>Includes: Adoption Support, Special guardianship Support</i></p> <p><i>£ per head population 0- 17</i></p>

Table of data								
Financial year	2007/08	2008/09	2009/10	2010/11				
<b>Wiltshire Spend</b>		16	7	8				
<b>Statistical neighbour average (median)</b>		22	15	16				
<b>National (or England and Wales, UK, etc) (median)</b>		35	27	28				



**Describe the data to pick out features of performance and trends compared to other Local Authorities and National performance**

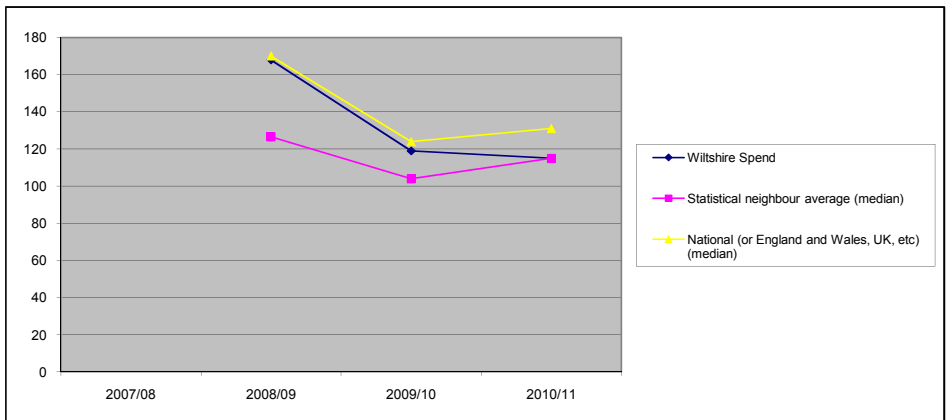
<b>2010/11</b>	Wiltshire spend consistently lower than that for England and statistical neighbours
----------------	---

<b>Date of completion</b>	<b>30/09/2010</b>
<b>Completed by</b>	<b>Liz Williams</b>

## Wiltshire Section 251 Benchmarking 2010-11

<b>Section 251 Line</b>	<b>Children's Services Strategy</b>
<b>Definition</b>	Includes: CYPP, Partnership Costs, Central Commissioning Costs, Commissioning & Social Work £ per head population 0- 17

Table of data							
Financial year	2007/08	2008/09	2009/10	2010/11			
<b>Wiltshire Spend</b>		168	119	115			
<b>Statistical neighbour average (median)</b>		127	104	115			
<b>National (or England and Wales, UK, etc) (median)</b>		170	124	131			



**Describe the data to pick out features of performance and trends compared to other Local Authorities and National performance**

<b>2010/11</b>	<p>Wiltshire spend decreased 2010/11 - now in line with average for statistical neighbours.</p> <p>This line includes all Social Work Teams and the budget is based on the old structure for Social Care - new structure may result in us completing the form differently in future years particularly in the split between what is considered to be "commissioning and Social Work" and what might be included under LAC.</p>
----------------	--

<b>Date of completion</b>	<b>30/09/2010</b>
<b>Completed by</b>	<b>Liz Williams</b>